

MEALS ON WHEELS

AUGUST 27-29, 2019

ANNUAL CONFERENCE AND EXPO

DALLAS, TX



ACTIVATING AROUND OUR ASSETS



**L. CARTER
FLORENCE, Meals on
Wheels America—
Arlington, VA**

SPEAKERS

**SHARRON
CRAWFORD CORLE,
Meals on Wheels
America – Arlington,
VA**





Objectives

1. Understand the asset mapping process
2. Realize the potential of the asset mapping process
3. Increase your capacity to do informal planning with asset mapping



Agenda

1. Interactive Introductions
2. What is asset mapping?
3. Community assets
4. Gallery Walk
5. What to do now?

Interactive Introductions

List program assets:

- Think:
 - People
 - Place in Community
 - Budget
 - Physical space
 - Relationships





At your table

1. Identify a scribe
2. Introduce yourself and your individual program assets
3. Create a table-level group assets on a flip chart

WHAT IS ASSET MAPPING?

Needs vs. Assets
Visual Depiction

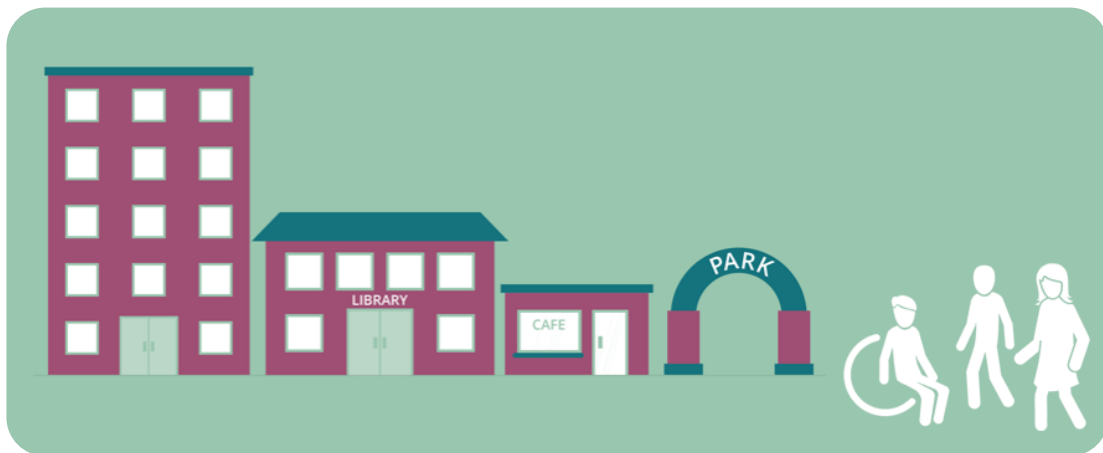


Kretzmann & McKnight (2003) called it at Capacity Inventory

WHAT ARE YOUR PROGRAM COMMUNITY ASSETS?

Broadly, a community asset is anything that can be used to improve the quality of community life.

- Person
- Place
- Services
- Programs
- Etc...





BOUNDARY SETTING

- Can be useful to create a frame for your community assets.
- This allows for more targeted strategy building and gap analysis from your map

OUR BOUNDARIES FOR TODAY

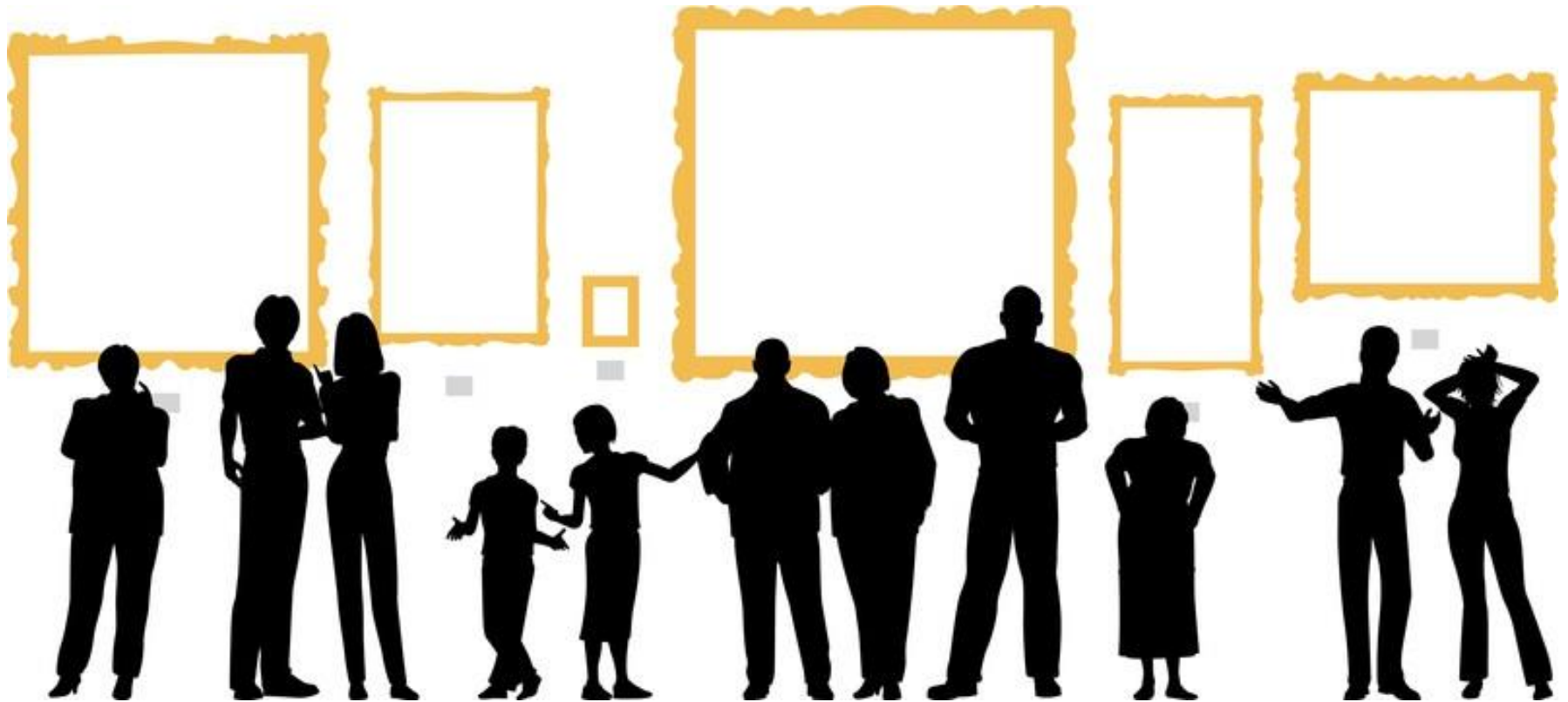




AS A TABLE

Identify community assets around nutrition, safety, socialization, and other services you offer.

GALLERY WALK



GALLERY WALK



What are the top 3 takeaways from the community asset maps?



WHAT DO YOU DO NOW?

A FEW EXAMPLES

1. At the program level, you can do asset mapping with staff back at home to see if you and your staff agree on the key assets of your organization
2. At the coalition level, you can walk the group through a community mapping process
3. Use during strategic planning to understanding the larger context you are operating in
4. Use asset mapping to identify potential and unusual funding sources



TAKE ACTION & CONNECT

Use this time to document one action you are willing to commit to from today's discussion

Make sure you document a contact you want to follow-up with from today's mapping workshop.



Additional Resources

Community Tool Box:

<https://ctb.ku.edu/en/table-of-contents/assessment/assessing-community-needs-and-resources/identify-community-assets/main>

Evaluation

Please be sure to
complete your
evaluation in the App!

